

DOMESTIC SOLAR CASE STUDY

## Giant Close



**EMPOWER**  
ENERGY

**TOMORROW'S GENERATION TODAY**



# Giant Close

Empower Energy was commissioned to design a 4.08 KWp Solar PV roof mount system. The system consisted of 12x JA Solar solar panels, 12 x P401 optimisers and an MPP1 SolarEdge inverter.

SolarEdge inverters are specifically designed to work with SolarEdge inverters which are designed to increase energy production by panel optimisation.

**solar**edge  
architects of energy™



SOLAR PV SYSTEM

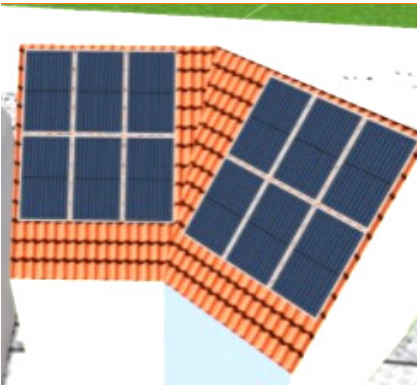
## KEY FACTS

INSTALLED  
2021

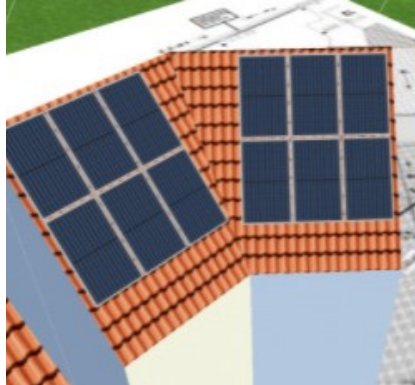
SIZE  
4.08 KWP

JA SOLAR PANELS

SOLAR EDGE  
OPTIMISERS &  
INVERTERS



SOLAR PV DESIGN



SOLAR PV DESIGN

CO2 REDUCTION  
2,036 Kg / year



Enhance your  
**green** credentials



Protect against  
**rising** fuel costs

In a market often associated with pushy sales people and poor customer care, our attention to detail and honest approach constantly reinforces our good reputation.

If you would like more information on how to become more energy efficient or would like to book a free, no-obligation survey then please get in touch.

✉ [info@empowerenergy.co.uk](mailto:info@empowerenergy.co.uk)

☎ 01425 461 461

**EMPOWER**  
ENERGY

**TOMORROW'S GENERATION TODAY**