

COMMERCIAL CASE STUDY
Linwood School



EMPOWER
ENERGY

TOMORROW'S GENERATION TODAY

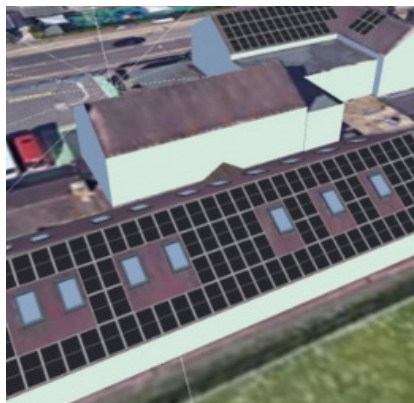
Linwood School

Empower Energy were selected to design and install a 50 KW solar PV system on the plain-tile roofs of Linwood School which we completed in July 2021.

The system was installed in just 3 days and consisted of 138x 365W Canadian solar, solar panels. 69 x P801 optimisers, and a 1x SE-50000 SolarEdge inverter system. SolarEdge are able to increase energy production and are equipped with automatic shutdown for maximum safety.

All our installers on-site are CRB checked which was important due to ongoing summer school activity. The job was organised for the scaffolding to be erected on the Monday and taken down on the Friday which enabled the school play areas to be handed back over with the minimum of disruption to the school. The solar installation will help Linwood School to save on electricity bills. It will also reduce over 25,102 KG / Year of carbon footprint.

"It has been a good, positive experience" Thomas Burnett at Wessex Energy Solutions



SOLAR PV DESIGN



SOLAREEDGE INVERTER



SOLAR PV SYSTEM

KEY FACTS

INSTALLED
July 2021

138 x 365W Solar Panels
69 x P801 Optimisers
1x SolarEdge Inverter

SIZE
50 KWP

PANEL
Canadian Solar

INVERTER
&
OPTIMISER
SOLAREEDGE

CO2 REDUCTION
25,102 KG /
Year



Enhance your
green credentials



Protect against
rising fuel costs

In a market often associated with pushy sales people and poor customer care, our attention to detail and honest approach constantly reinforces our good reputation.

If you would like more information on how to become more energy-efficient or would like to book a free, no-obligation survey to find out how much you could save then please get in touch.



info@empowerenergy.co.uk



01425 461461

EMPOWER
ENERGY

TOMORROW'S GENERATION TODAY