

COMMERCIAL CASE STUDY

Viadex



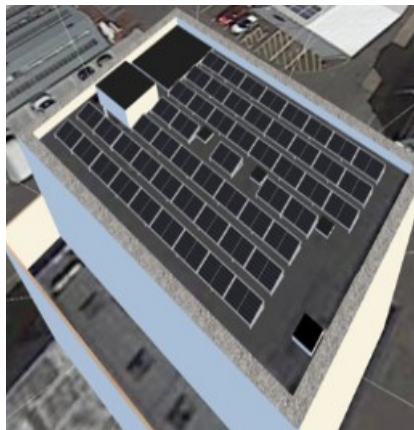
TOMORROW'S GENERATION TODAY

# Viadex

Empower Energy was commissioned to design and install a 21.32 KWp solar PV system on the rooftop of Viadex in Surrey.

The system consisted of 52 x 410W JASolar, solar panels, 26 x P850 optimisers, and a 1x SE17K SolarEdge inverter system. SolarEdge inverters are specifically designed to work with a SolarEdge power optimiser. SolarEdge are able to increase energy production and are equipped with automatic shutdown for maximum safety.

The solar installation will help the business to save on electricity bills. It will also reduce over 10,274 KG / Year of carbon footprint a year.



SOLAR PV DESIGN



SOLAR PV SYSTEM



SOLAR PV SYSTEM

## KEY FACTS

INSTALLED  
July 2021

52 x 410W Solar Panels  
26 x P850 Optimisers  
1x SolarEdge Inverter

SIZE  
21.32 KWP

PANEL  
JA Solar

INVERTER  
&  
OPTIMISER  
SOLAREGE

CO2 REDUCTION  
10,274 KG /  
Year



Enhance your  
**green** credentials



Save you **£1000s**  
every year



Protect against  
**rising fuel costs**

In a market often associated with pushy sales people and poor customer care, our attention to detail and honest approach constantly reinforces our good reputation.

If you would like more information on how to become more energy efficient or would like to book a free, no-obligation survey to find out how much you could save then please get in touch.

✉ [info@empowerenergy.co.uk](mailto:info@empowerenergy.co.uk)

☎ 01425 461461

**EMPOWER**  
ENERGY

**TOMORROW'S GENERATION TODAY**