



DOMESTIC SOLAR CASE STUDY

13 Bethia Road

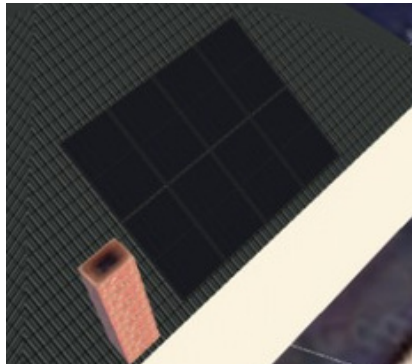
TOMORROW'S GENERATION TODAY

EMPOWER
ENERGY

13 Bethia Road

Empower Energy was commissioned to design a 5.44KWp Solar system. The system consists of 16 Q Cells solar panels, 16 x optimisers P401 and a SolarEdge inverter SE-3680H-APP. SolarEdge inverters are specifically designed to work with SolarEdge inverters which are designed to increase energy production by panel optimisation.

solaredge
architects of energy™



SOLAR PV DESIGN

KEY FACTS

INSTALLED
JUNE 2021

SIZE
5.44 KWP

PANEL TYPE
Q CELLS

SOLAR EDGE
OPTIMISERS &
INVERTERS



PV PANELS



CO2 REDUCTION
3,097 Kg / year



Enhance your
green credentials



Protect against
rising fuel costs

In a market often associated with pushy sales people and poor customer care, our attention to detail and honest approach constantly reinforces our good reputation.

If you would like more information on how to become more energy efficient or would like to book a free, no-obligation survey then please get in touch.

✉ info@empowerenergy.co.uk

☎ 01425 461 461

EMPOWER
ENERGY

TOMORROW'S GENERATION TODAY