

COMMERCIAL CASE STUDY

Moors Valley Country Park

TOMORROW'S GENERATION TODAY

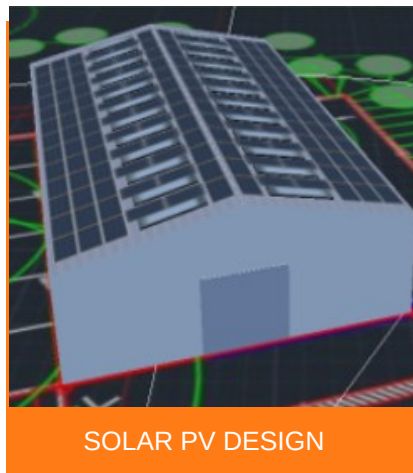
EMPOWER
ENERGY

Moors Valley Country Park

Empower Energy was commissioned to design and install a 54 KWP solar PV system on the rooftop of Moors Valley Country Park In Verwood

The system consisted of 144 x 375W Trina Solar, solar panels, 72 x P850 optimisers, and a 1x SE-50000 SolarEdge inverter system. SolarEdge inverters are specifically designed to work with a SolarEdge power optimiser. SolarEdge is able to increase energy production and are equipped with automatic shutdown for maximum safety.

The solar installation will help the business to save on electricity bills. It will also reduce over 27,774 KG / Year of carbon footprint a year.



KEY FACTS

INSTALLED

April 2021

144 x 375 kW solar Panels

72x P850 Optimisers
1x SolarEdge Inverter

SIZE
54 KWP

PANEL
Trina Solar

INVERTER
&
OPTIMISER
SOLAREGE

CO2 REDUCTION
27,774 KG /
Year



Enhance your
green credentials



Save you **£1000s**
every year



Protect against
rising fuel costs

In a market often associated with pushy sales people and poor customer care, our attention to detail and honest approach constantly reinforces our good reputation.

If you would like more information on how to become more energy efficient or would like to book a free, no-obligation survey to find out how much you could save then please get in touch.

✉ info@empowerenergy.co.uk

☎ 01425 461461

EMPOWER
ENERGY

TOMORROW'S GENERATION TODAY