

DOMESTIC CASE STUDY

Shackleton Square

EMPOWER
ENERGY

TOMORROW'S GENERATION TODAY

Shackleton Square

Empower Energy was commissioned by a domestic property on Shackleton Square, Hampshire to design and install a 3.75 KWp Solar PV system. The system consists of 10 x JA Solar 3.75 Wp solar panels, 10 x P401 optimisers and a 1 x SolarEdge SE3000H inverter. The SolarEdge inverter is specifically designed to work with the SolarEdge power optimiser, they are designed to increase energy production and are equipped with an automatic shutdown option for maximum safety. This solar installation will help the property to save in electricity costs. It will also reduce 1,787 kg of carbon footprint a year.

JA SOLAR

solaredge
architects of energy™



SOLAR PV SYSTEM

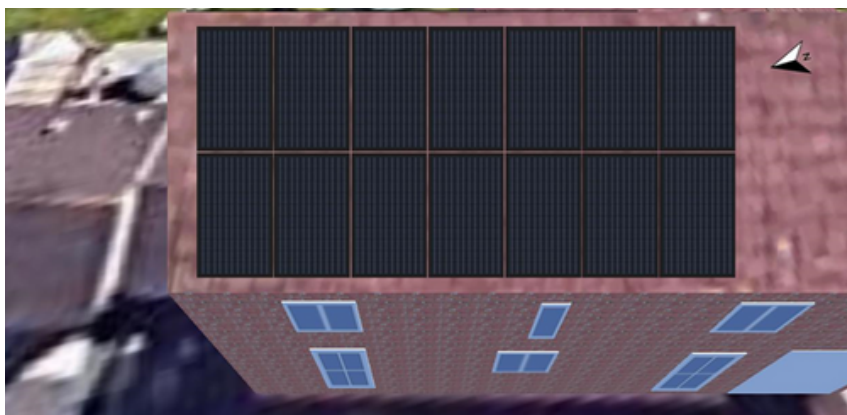
KEY FACTS

INSTALLED
NOVEMBER 2020

SIZE
3.75 KWp

PANEL
JA SOLAR

INVERTER
&
OPTIMISER
SOLAREGE



SOLAR PV DESIGN

CO2 REDUCTION

1,787Kg / year



Enhance your
green credentials



Protect against
rising fuel costs

In a market often associated with pushy sales people and poor customer care, our attention to detail and honest approach constantly reinforces our good reputation.

If you would like more information on how to become more energy efficient or would like to book a free, no-obligation survey then please get in touch.



info@empowerenergy.co.uk



01425 461 461

EMPOWER
ENERGY

TOMORROW'S GENERATION TODAY