

An aerial photograph of a residential roof. The roof is covered with reddish-brown tiles. A large section of the roof is covered with dark blue solar panels, which are arranged in a grid pattern. A brick chimney is visible on the right side of the roof. In the background, there is a green lawn and some trees.

DOMESTIC CASE STUDY

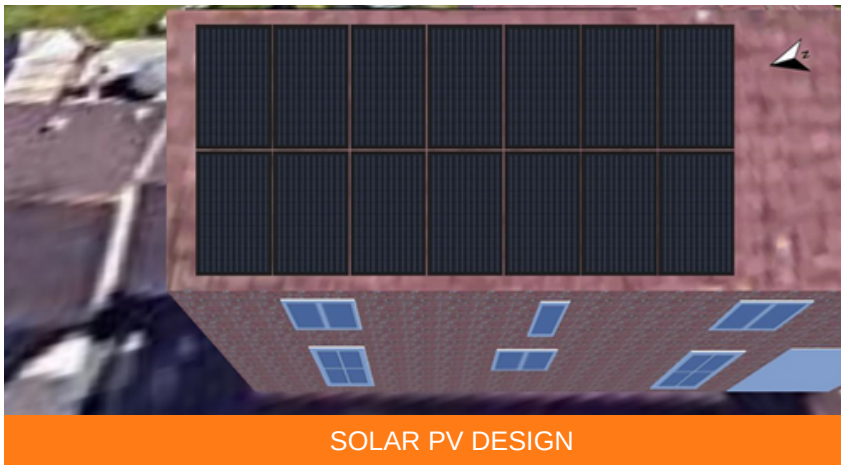
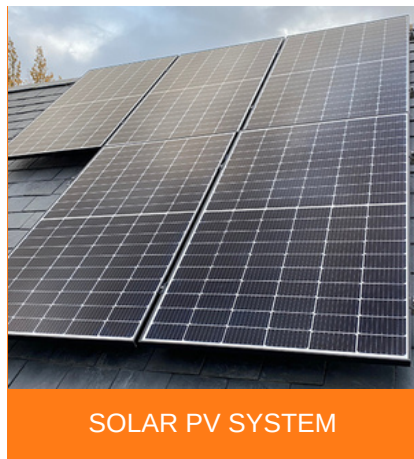
Plantagenet Crescent

EMPOWER
ENERGY

TOMORROW'S GENERATION TODAY

Plantagenet Crescent

Empower Energy was commissioned by a domestic property on Plantagenet Crescent, Dorset to design and install a 8.06 KWP Solar PV system. The system consists of 26 x Peimar 310 Wp solar panels, 26 x P370 optimisers and a 1 x SolarEdge SE6000 inverter. The SolarEdge inverter is specifically designed to work with the SolarEdge power optimiser, they are designed to increase energy production and are equipped with an automatic shutdown option for maximum safety. This solar installation will help the property to save in electricity costs. It will also reduce 4,178 kg of carbon footprint a year.



KEY FACTS

INSTALLED
OCTOBER 2020

SIZE
8.06 KWP

PANEL
PEIMAR

INVERTER
&
OPTIMISER
SOLAREGE

CO2 REDUCTION
4, 178 Kg / year



Enhance your
green credentials



Protect against
rising fuel costs

In a market often associated with pushy sales people and poor customer care, our attention to detail and honest approach constantly reinforces our good reputation.

If you would like more information on how to become more energy efficient or would like to book a free, no-obligation survey then please get in touch.

✉ info@empowerenergy.co.uk

☎ 01425 461 461

EMPOWER
ENERGY

TOMORROW'S GENERATION TODAY