

DOMESTIC CASE STUDY

Northfield Road

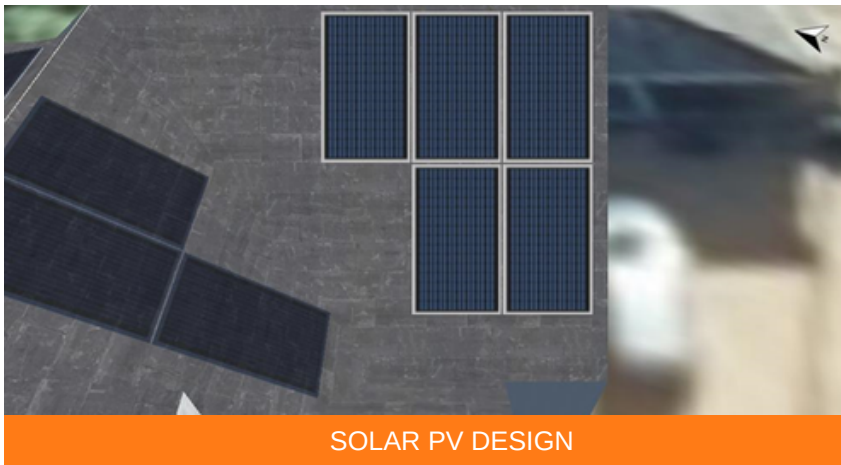
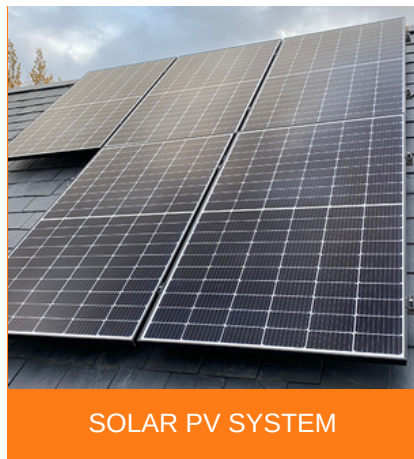


EMPOWER
ENERGY

TOMORROW'S GENERATION TODAY

Northfield Road

Empower Energy was commissioned by a domestic property on Northfield Road Hampshire to design and install a 5.25 KWp Solar PV system. The system consists of 14 x JA Solar 375Wp solar panels, 14 x P401 optimisers and a 1 x SolarEdge SE3680 inverter. The SolarEdge inverter is specifically designed to work with the SolarEdge power optimiser, they are designed to increase energy production and are equipped with an automatic shutdown option for maximum safety. This solar installation will help the business to save in electricity costs. It will also reduce 1,965 kg of carbon footprint a year.



KEY FACTS
INSTALLED
OCTOBER 2020

SIZE
5.25 KWP

PANEL
JA SOLAR

INVERTER
&
OPTIMISER
SOLAREGE

CO2 REDUCTION
1,965 Kg / year



Enhance your
green credentials



Save you **£1000s**
every year



Protect against
rising fuel costs

In a market often associated with pushy sales people and poor customer care, our attention to detail and honest approach constantly reinforces our good reputation.

If you would like more information on how to become more energy efficient or would like to book a free, no-obligation survey to find out how much you could save then please get in touch.

✉ info@empowerenergy.co.uk

☎ 01425 461 461

EMPOWER
ENERGY

TOMORROW'S GENERATION TODAY