

DOMESTIC SOLAR CASE STUDY

## The Old Rectory



**EMPOWER**  
ENERGY

**TOMORROW'S GENERATION TODAY**

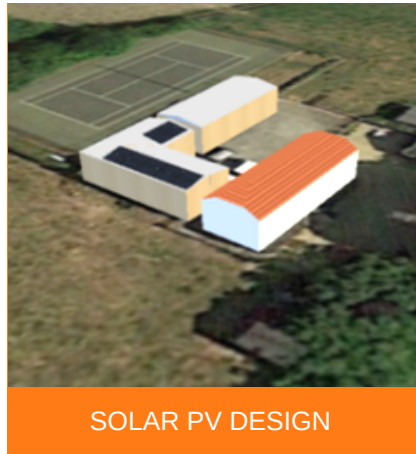
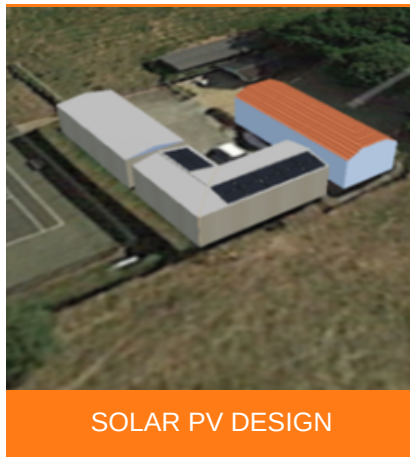


# The Old Rectory

Empower Energy was commissioned to design a 4.55 KWp Solar PV roof mount system. The system consisted of 14 x 325 solar panels, 14 x P370-MC4 optimisers and a SolarEdge inverter SM325M.

SolarEdge inverters are specifically designed to work with SolarEdge inverters which are designed to increase energy production by panel optimisation.

**solar**edge  
architects of energy™



## KEY FACTS

INSTALLED  
JULY 2020

SIZE  
4.55 KWP

PEIMAR  
PANELS

SOLAR EDGE  
OPTIMISERS &  
INVERTERS

CO2 REDUCTION  
2376 Kg/ year



Enhance your  
**green** credentials



Protect against  
**rising fuel costs**

In a market often associated with pushy sales people and poor customer care, our attention to detail and honest approach constantly reinforces our good reputation.

If you would like more information on how to become more energy efficient or would like to book a free, no-obligation survey then please get in touch.

✉ [info@empowerenergy.co.uk](mailto:info@empowerenergy.co.uk)

☎ 01425 461 461

**EMPOWER**  
ENERGY

**TOMORROW'S GENERATION TODAY**