

COMMERCIAL CASE STUDY

Lime Tree Care Home



EMPOWER
ENERGY

TOMORROW'S GENERATION TODAY

LIME TREE CARE HOME

Empower Energy was commissioned to design and install a 24.48KWp solar PV system on the rooftop of Leyland House in Hampshire.

The system consisted of 72x 340W solar panels, 72x P370 optimisers and a 1x SolarEdge inverter system. SolarEdge inverters are specifically designed to work with a SolarEdge power optimiser. SolarEdge are able to increase energy production and are equipped with automatic shutdown for maximum safety.

The solar installation will help the business to save on electricity bills. It will also reduce 11,833 Kg of carbon footprint a year.

KEY FACTS

INSTALLED

June 2020

72 x 340W solar Panels

38 x P300 Optimisers

1x SolarEdge Inverters

SIZE

24 KWP

PANEL

JA SOLAR

INVERTER

&

OPTIMISER

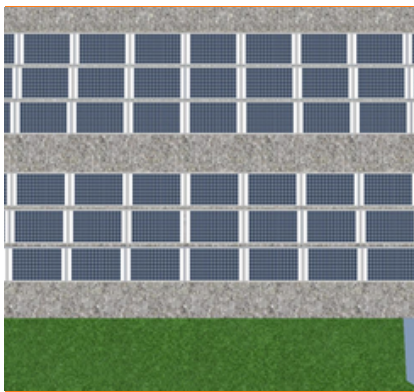
SOLAREGE



SOLAR PV SYSTEM

JA SOLAR

solar**edge**
architects of energy™



SOLAR PV DESIGN



SOLAR PV SYSTEM

CO2 REDUCTION

11,883 Kg / year



Enhance your
green credentials



Save you **£1000s**
every year



Protect against
rising fuel costs

In a market often associated with pushy sales people and poor customer care, our attention to detail and honest approach constantly reinforces our good reputation.

If you would like more information on how to become more energy efficient or would like to book a free, no-obligation survey to find out how much you could save then please get in touch.



info@empowerenergy.co.uk



01425 461461

EMPOWER
ENERGY

TOMORROW'S GENERATION TODAY