

DOMESTIC SOLAR CASE STUDY

48 Abbotsbury Road



EMPOWER
ENERGY

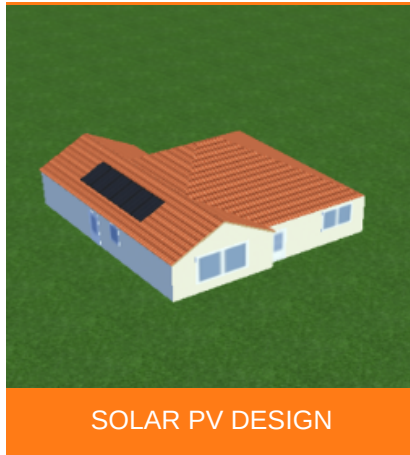
TOMORROW'S GENERATION TODAY

48 Abbotsbury Road

Empower Energy was commissioned to design a 1.8 kWp Solar PV roof mount system. The system consisted of 6 x 300 solar panels and a Growatt inverter 1500s.

Growatt inverters are designed to work with your solar system with the aim to achieve high efficiency and maximum productivity throughout.

powering tomorrow
Growatt



SOLAR PV DESIGN

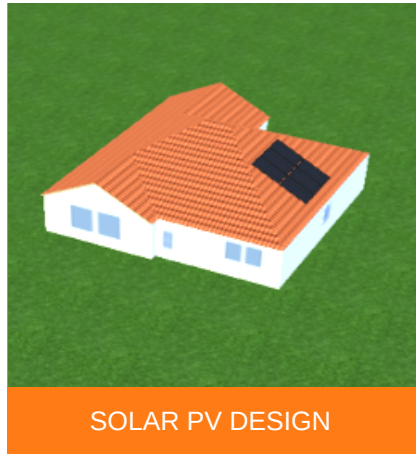
KEY FACTS

INSTALLED
MARCH 2020

SIZE
1.8 KWP

CANADIAN SOLAR
PANELS

GROWATT
INVERTERS



SOLAR PV DESIGN



CO2 REDUCTION
895 Kg/ year



Enhance your
green credentials



Protect against
rising fuel costs

In a market often associated with pushy sales people and poor customer care, our attention to detail and honest approach constantly reinforces our good reputation.

If you would like more information on how to become more energy efficient or would like to book a free, no-obligation survey to find out how much you could save then please get in touch.

✉ info@empowerenergy.co.uk

☎ 01425 461 461

EMPOWER
ENERGY

TOMORROW'S GENERATION TODAY