

DOMESTIC SOLAR CASE STUDY

## 11 Lower Quay Close



**EMPOWER**  
ENERGY

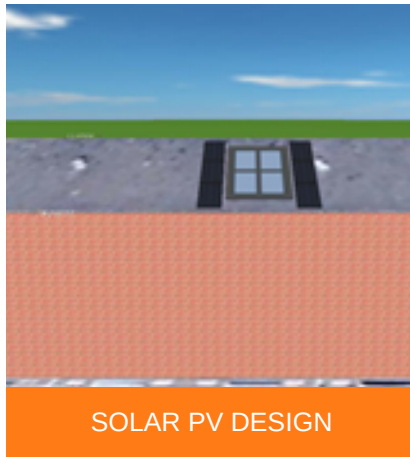
**TOMORROW'S GENERATION TODAY**

# 11 Lower Quay Close

Empower Energy was commissioned to design a 2.2 KWp Solar PV roof mount system. The system consisted of 7x Peimar SG310M solar panels and a Growatt inverter.

Growatt inverters are designed to work with your solar system with the aim to achieve high efficiency and maximum productivity throughout.

powering tomorrow  
**Growatt**



SOLAR PV DESIGN

## KEY FACTS

INSTALLED  
JULY 2020

SIZE  
2.2 KWP

PEIMAR  
PANELS

GROWATT  
INVERTERS



GROWATT INVERTER



CO2 REDUCTION  
1,057 Kg / year



Enhance your  
**green** credentials



Protect against  
**rising fuel costs**

In a market often associated with pushy sales people and poor customer care, our attention to detail and honest approach constantly reinforces our good reputation.

If you would like more information on how to become more energy efficient or would like to book a free, no-obligation survey then please get in touch.

✉ [info@empowerenergy.co.uk](mailto:info@empowerenergy.co.uk)

☎ 01425 461 461

**EMPOWER**  
ENERGY

**TOMORROW'S GENERATION TODAY**