

DOMESTIC SOLAR CASE STUDY  
**102a Merley Lane**

**EMPOWER**  
ENERGY

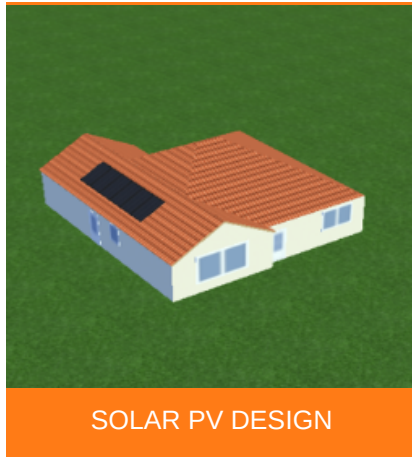
**TOMORROW'S GENERATION TODAY**

# 102a Merley lane

Empower Energy was commissioned by Edgewater Homes to design a 1.2 kWp Solar PV roof mount system. The system consisted of 4 x 300 solar panels and a Growatt inverter 1000-S.

Growatt inverters are designed to work with your solar system with the aim to achieve high efficiency and maximum productivity throughout.

powering tomorrow  
**Growatt**



SOLAR PV DESIGN

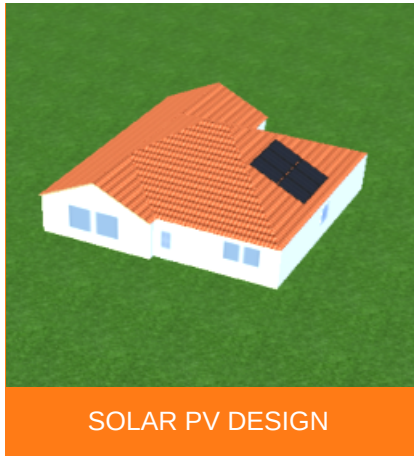
## KEY FACTS

INSTALLED  
MARCH 2020

SIZE  
1.2 KWP

CANADIAN SOLAR  
PANELS

GROWATT  
INVERTERS



SOLAR PV DESIGN



CO2 REDUCTION  
702 Kg/ year



Enhance your  
**green** credentials



Protect against  
**rising fuel costs**

In a market often associated with pushy sales people and poor customer care, our attention to detail and honest approach constantly reinforces our good reputation.

If you would like more information on how to become more energy efficient or would like to book a free, no-obligation survey to find out how much you could save then please get in touch.

✉ [info@empowerenergy.co.uk](mailto:info@empowerenergy.co.uk)

☎ 01425 461 461

**EMPOWER**  
ENERGY

**TOMORROW'S GENERATION TODAY**