

COMMERCIAL CASE STUDY

Stewarts Garden Centre



EMPOWER
ENERGY

TOMORROW'S GENERATION TODAY

Stewarts Garden Centre

Empower Energy was commissioned to design and install a 120.27 KWp solar PV system on the rooftop of Stewarts Garden Centre store in Christchurch.

The system consisted of 422 x Peimar 285W solar panels, 215 x P600 optimisers and a 2x SolarEdge inverter system. SolarEdge inverters are specifically designed to work with a SolarEdge power optimiser. SolarEdge are able to increase energy production and are equipped with automatic shutdown for maximum safety.

The solar installation will help the business to save on electricity bills. It will also reduce 73,204 kg of carbon footprint a year.

KEY FACTS

INSTALLED
January 2020

422 x 285W solar Panels
215 x P600 Optimisers
2x SolarEdge Inverter

SIZE
120.27 KWP

PANEL
PEIMAR

INVERTER
&
OPTIMISER
SOLAREGE

/// PEIMAR

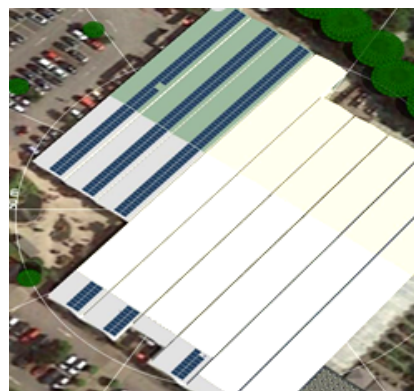
solaredge
architects of energy™



MOUNTING RAIL



SolarEdge Inverter



SOLAR PV DESIGN

CO2 REDUCTION
73,204 Kg / year



Enhance your
green credentials



Save you **£1000s**
every year



Protect against
rising fuel costs

In a market often associated with pushy sales people and poor customer care, our attention to detail and honest approach constantly reinforces our good reputation.

If you would like more information on how to become more energy efficient or would like to book a free, no-obligation survey to find out how much you could save then please get in touch.

✉ info@empowerenergy.co.uk

☎ 01425 461461

EMPOWER
ENERGY

TOMORROW'S GENERATION TODAY