

Making Solar Systems Smarter



solar**edge**

Looking for Great Reasons to Go Solar?

It will save you money

Power your home with solar energy to reduce your electricity bills or earn revenue, depending on your local solar scheme.

It's a smart, long-term investment

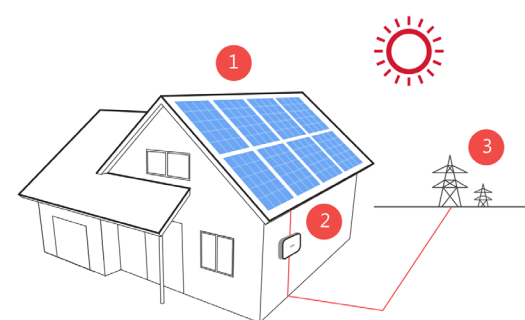
Install solar to enhance your property value and mitigate the effect of rising electricity costs.

It just feels right

Lower your carbon footprint by generating and using clean, renewable energy.

With solar technology more affordable than ever, now is the time to go solar.

How Does Solar Energy Work?

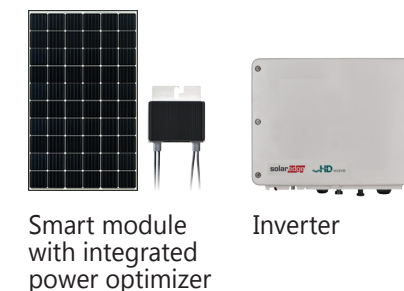


- 1 Solar modules, convert sunlight into clean DC electricity.
- 2 A solar inverter converts the DC electricity into grid-compliant AC electricity to power the home.
- 3 Utility power is provided when needed e.g. at night or during peak demand periods. Excess electricity can also be exported to the utility for credit or revenue, depending on the available solar scheme.

Smart Energy Solutions from SolarEdge

Optimize your PV system with SolarEdge

SolarEdge achieves higher PV production than traditional systems. Each SolarEdge solar module on your roof is integrated with a power optimizer, for maximized output. A smart inverter manages your PV system, and supports future upgrades to extended capabilities such as battery storage, EV charging, and smart energy.



Smart module with integrated power optimizer

Inverter

Looking for energy independence? Try battery storage

The StorEdge® solution is designed to maximize your solar energy usage for increased energy independence and lower electricity bills.

Excess PV power is stored in a battery and used when needed to help meet your home consumption demands.

The backup option allows you to stay connected even during power outages.



Charge your EV using the power of the sun

Whether you already own an EV or just want to be EV ready for the future, install an EV charging inverter to combine PV and grid power for up to 2.5x faster charging than standard EV chargers. Save the costs of installing separately an EV charging station and a PV inverter.



Take control with the smart energy suite

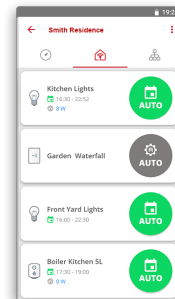
Cut your electricity bills by combining excess PV power with smart scheduling to heat your water. Control home appliances remotely using the mobile monitoring app.



/ The Complete SolarEdge Residential Solution

Smart energy

- Utilize excess solar energy to power heat pumps, to heat water, or to power lights and other typical home appliances
- Automatic, on-the-go control of your devices via SolarEdge's monitoring platform



Smart energy hot water



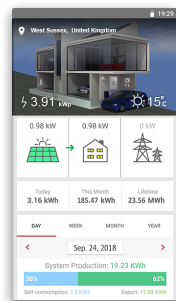
Smart energy relay



Smart energy socket

Monitoring platform

- Free real-time monitoring of every module in your system
- Monitoring of PV production, consumption and self-consumption, smart energy, as well as battery and EV charging levels
- Automatic alerts
- Access from your mobile device, anytime, anywhere



Smart modules

- Premium SolarEdge smart modules, each integrated with a power optimizer for greater energy harvest
- Elegant module design with a black frame
- Excellent reliability, with superior quality control guaranteed by SolarEdge



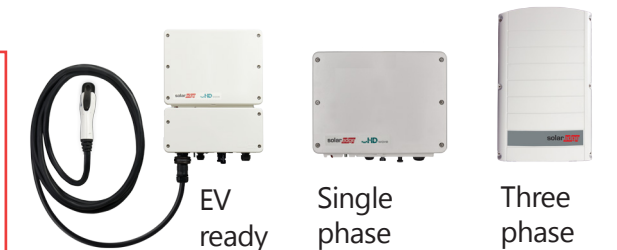
Power optimizer

- Integrated with each SolarEdge smart module on the roof, for increased module output, enhanced system safety, and real-time module information
- Can also be installed on third-party modules, converting them into smart modules



Inverter

- The brains of the PV system
- Efficiently converts DC energy to AC electricity for use in your home and utility grid
- Manages system production, battery power, EV charging, and smart energy



StorEdge®

- Store unused PV energy in batteries for times when solar energy is not available
- Use backup power during grid outages

Compatible with

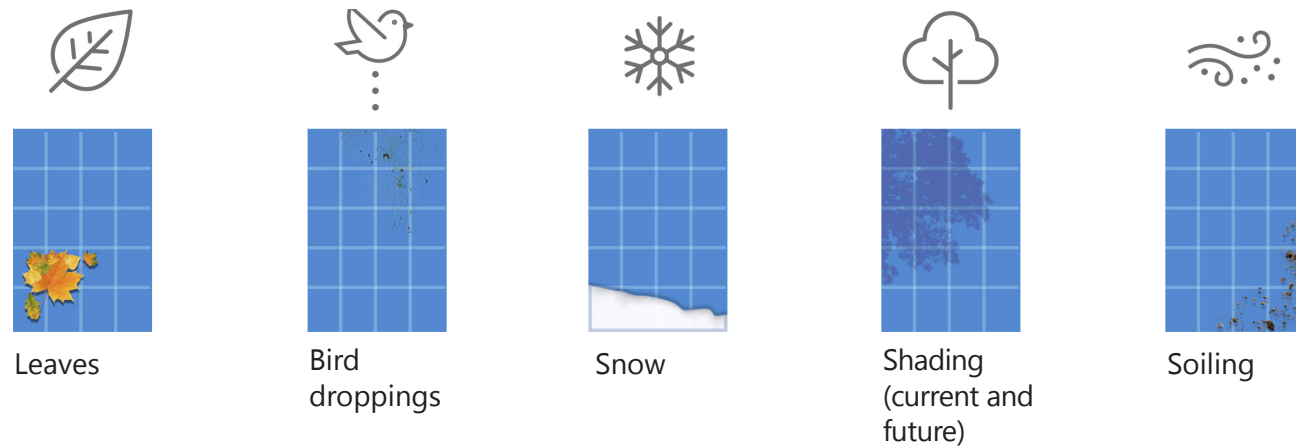
 LG Chem RESU 7H/10H batteries

/ Why Choose a SolarEdge System to Power Your Home?

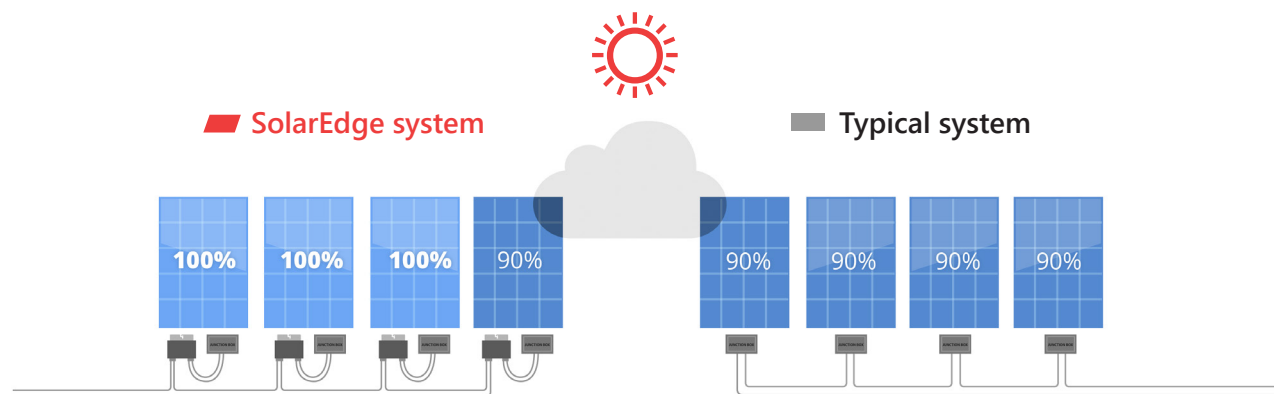
More energy from the sun

More power = more savings on your electricity bill

In a PV system, each module has an individual maximum power point. Differences between modules introduce power losses and can lead to underperformance of the entire system over time.



With traditional inverters, the weakest module reduces the performance of all modules. With SolarEdge, each module produces the maximum energy, and power losses are eliminated.



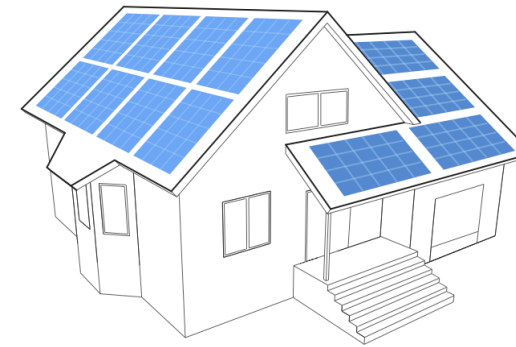
Exceptional safety

SolarEdge's SafeDC™ feature is designed to reduce the PV array to a safe voltage upon AC or inverter shutdown, offering more protection to installers, firefighters, and your home. Compliant with the most advanced safety standards.

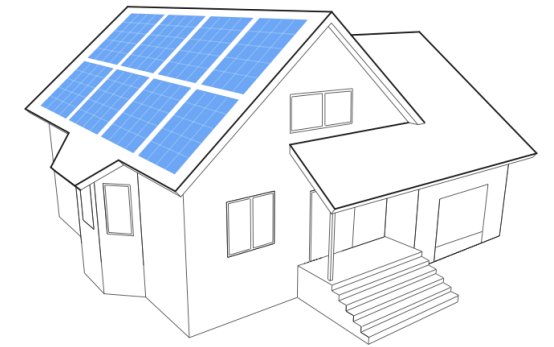
More aesthetic rooftops

SolarEdge enables optimal rooftop utilization, resulting in a more aesthetic design, for more energy and more savings.

SolarEdge system



Typical system



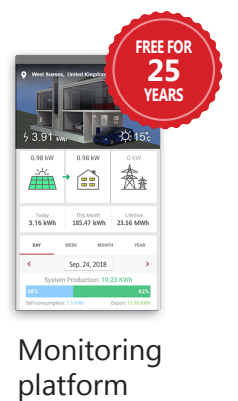
Full system monitoring

A solar PV system without monitoring would be like a car without a dashboard. The SolarEdge monitoring platform provides free, real-time visibility into the performance of each module on your roof. Access is available from any computer or mobile device, anytime, anywhere.



Long-term warranties

SolarEdge products are field-proven and built for lasting performance. This enables us to offer warranties which are amongst the longest in the industry, including 25-year module performance warranty and 15-year module warranty; 25 years for SolarEdge power optimizers and 12 years for inverters (extendable to 20 or 25 years for an additional cost). Protect your investment and enjoy peace of mind.



Be ready for the future

Your SolarEdge system is future-proofed, supporting easy upgrades to solutions you may not need today but will do in the future, such as battery storage, EV charging, and smart energy.

"I'm so happy with my SolarEdge system. It's great knowing that I'm generating my own electricity and reducing my electricity bills every day. The monitoring app is great to see the performance of the different roofs throughout the day and when we are using power from the grid. I like that I can add a battery and EV charger in the future, it's money well spent. A great investment."

Julie C., UK

About SolarEdge

SolarEdge is a global leader in smart energy technology. By deploying world-class engineering capabilities and a relentless focus on innovation, we create smart energy products and solutions that power our lives and drive future progress.

f SolarEdge
t @SolarEdgePV
ig @SolarEdgePV
y SolarEdgePV
in SolarEdge
e info@solaredge.com

solaredge.com

© SolarEdge Technologies, Inc.
All rights reserved.
Rv: 10/2019/V01/ENG ROW.
Subject to change without notice.

solaredge