

COMMERCIAL CASE STUDY

Project Combine



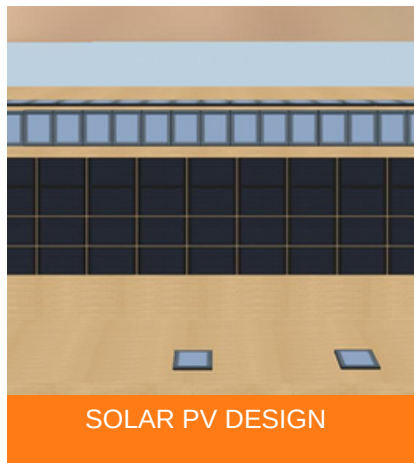
TOMORROW'S GENERATION TODAY

Project Combine

Empower Energy was commissioned to design and install a 28.56 KWP solar PV system on the rooftop of project combine in Leicestershire.

The system consisted of 84 x 340W solar panels, 84 x P370 optimisers and a 1x SE25K SolarEdge inverter system. SolarEdge inverters are specifically designed to work with a SolarEdge power optimiser. SolarEdge are able to increase energy production and are equipped with automatic shutdown for maximum safety.

The solar installation will help the business to save on electricity bills. It will also reduce 17, 235kg of carbon footprint a year.



KEY FACTS

INSTALLED
February 2020
84 x 340W solar Panels
84 x P370 Optimisers
1x SolarEdge Inverter

SIZE
28.56 KWP

PANEL
JA SOLAR

**INVERTER
&
OPTIMISER**
SOLAREGE

CO2 REDUCTION
17, 235Kg / year



Enhance your
green credentials



Save you **£1000s**
every year




Protect against
rising fuel costs

In a market often associated with pushy sales people and poor customer care, our attention to detail and honest approach constantly reinforces our good reputation.

If you would like more information on how to become more energy efficient or would like to book a free, no-obligation survey to find out how much you could save then please get in touch.

 info@empowerenergy.co.uk

 01425 461461

EMPOWER
ENERGY

TOMORROW'S GENERATION TODAY