

COMMERCIAL CASE STUDY

# Charlew Developements Ltd



**EMPOWER**  
ENERGY

**TOMORROW'S GENERATION TODAY**

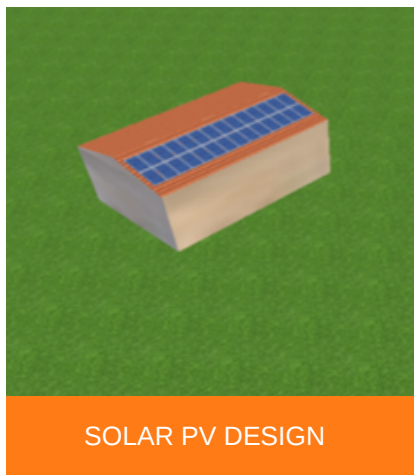
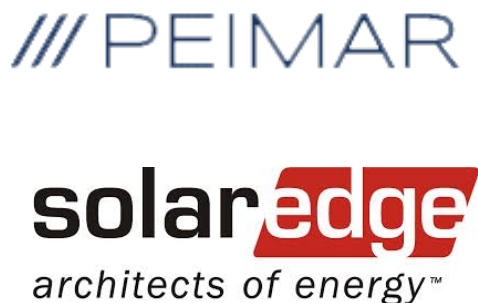


# Charlew Developments Ltd

Empower Energy was commissioned to design and install a 9.28KWp solar PV system on the rooftop of Charlew Developments Ltd in Dorset.

The system consisted of 32 x 290W solar panels, 32 x P370 optimisers and a 1x SE8K SolarEdge inverter system. SolarEdge inverters are specifically designed to work with a SolarEdge power optimiser. SolarEdge are able to increase energy production and are equipped with automatic shutdown for maximum safety.

The solar installation will help the business to save on electricity bills. It will also reduce 4,438 KG of carbon footprint a year.



SOLAR PV DESIGN



SOLAREEDGE INVERTER



SOLAR PV SYSTEM

## KEY FACTS

INSTALLED  
July 2020

32 x 290W solar Panels  
32 x P370 Optimisers  
1x SolarEdge Inverter

SIZE  
KWP

PANEL  
PEIMAR

INVERTER  
&  
OPTIMISER  
SOLAREEDGE

CO2 REDUCTION  
4,438 / year



Enhance your  
**green** credentials



Save you **£1000s**  
every year



Protect against  
**rising fuel costs**

In a market often associated with pushy sales people and poor customer care, our attention to detail and honest approach constantly reinforces our good reputation.

If you would like more information on how to become more energy efficient or would like to book a free, no-obligation survey to find out how much you could save then please get in touch.

✉ [info@empowerenergy.co.uk](mailto:info@empowerenergy.co.uk)

☎ 01425 461461

**EMPOWER**  
ENERGY

**TOMORROW'S GENERATION TODAY**