

COMMERCIAL CASE STUDY

# St Martin's Gate Car Park



**EMPOWER**  
ENERGY

**TOMORROW'S GENERATION TODAY**

# St Martin's Gate Multi-Storey Car Park

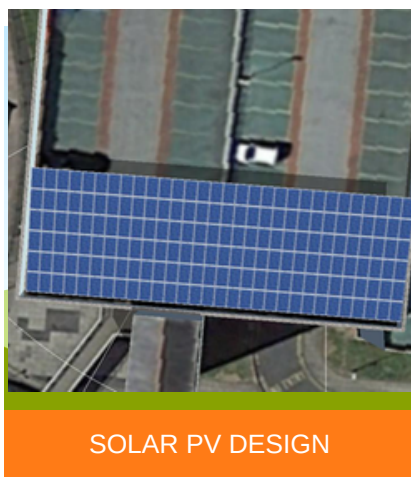
Empower Energy was commissioned to design and install a 50 KWp solar pv system for a carport at St Martin's car park in Worcester.

The system consisted of 178 x 280W solar panels, 89 x P600 optimisers and a 2x SolarEdge inverter system. SolarEdge inverters are specifically designed to work with a SolarEdge power optimiser. SolarEdge are able to increase energy production and are equipped with automatic shutdown for maximum safety.

The solar installation will help the business to save on electricity bills. It will also reduce 23.368 kg of carbon footprint a year.

///PEIMAR

**solar**edge  
architects of energy™



SOLAR PV DESIGN

## KEY FACTS

### INSTALLED

March 2019

178 x 280W solar Panels  
89 x P600 Optimisers  
2x SolarEdge Inverters

SIZE  
50 KWp

PANEL  
PEIMAR

INVERTER  
&  
OPTIMISER  
SOLAREGE

### CO2 REDUCTION

23.368 Kg / year



Enhance your  
**green** credentials



Save you **£1000s**  
every year



Protect against  
**rising fuel costs**

In a market often associated with pushy sales people and poor customer care, our attention to detail and honest approach constantly reinforces our good reputation.

If you would like more information on how to become more energy efficient or would like to book a free, no-obligation survey to find out how much you could save then please get in touch.

✉ [info@empowerenergy.co.uk](mailto:info@empowerenergy.co.uk)

☎ 01425 461461

**EMPOWER**  
ENERGY

**TOMORROW'S GENERATION TODAY**