

COMMERCIAL CASE STUDY

Merchant Taylor

EMPOWER
ENERGY

TOMORROW'S GENERATION TODAY

Merchant Taylor

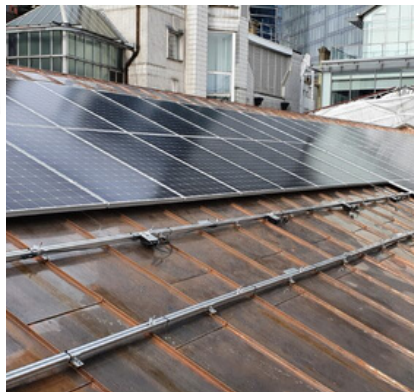
Empower Energy was commissioned to design and install a 30KWp solar PV system on the rooftop of Leyland House in Hampshire.

The system consisted of 75 x 400W solar panels, 169 x P300 optimisers and a 1x SE25K SolarEdge inverter system. SolarEdge inverters are specifically designed to work with a SolarEdge power optimiser. SolarEdge are able to increase energy production and are equipped with automatic shutdown for maximum safety.

The solar installation will help the business to save on electricity bills. It will also reduce 22,532kg of carbon footprint a year.

SUNPOWER®

solar**edge**
architects of energy™



MOUNTING RAIL



SolarEdge INVERTER



SOLAR PV SYSTEM

KEY FACTS

INSTALLED

June 2020

75 x 400W solar Panels

38 x P300 Optimisers

1x SolarEdge Inverters

SIZE

30 KWP

PANEL

SUNPOWER

INVERTER

&

OPTIMISER

SOLAREGE

CO2 REDUCTION

14,605Kg / year



Enhance your
green credentials



Save you **£1000s**
every year



Protect against
rising fuel costs

In a market often associated with pushy sales people and poor customer care, our attention to detail and honest approach constantly reinforces our good reputation.

If you would like more information on how to become more energy efficient or would like to book a free, no-obligation survey to find out how much you could save then please get in touch.



info@empowerenergy.co.uk



01425 461461

EMPOWER
ENERGY

TOMORROW'S GENERATION TODAY