

COMMERCIAL CASE STUDY

# Leyland House



**EMPOWER**  
ENERGY

**TOMORROW'S GENERATION TODAY**

# Leyland House

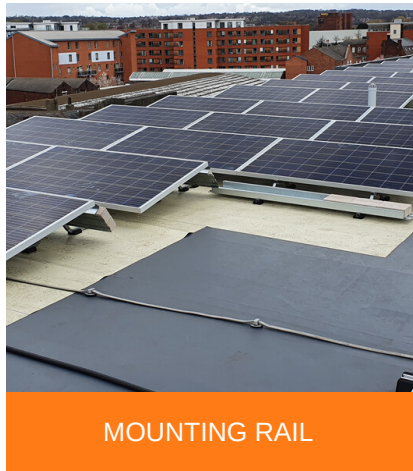
Empower Energy was commissioned to design and install a 48.17 KWP solar PV system on the rooftop of Leyland House in Hampshire.

The system consisted of 169 x 285W solar panels, 169 x P300 optimisers and a 1x SE-50000 SolarEdge inverter system. SolarEdge inverters are specifically designed to work with a SolarEdge power optimiser. SolarEdge are able to increase energy production and are equipped with automatic shutdown for maximum safety.

The solar installation will help the business to save on electricity bills. It will also reduce 22,532kg of carbon footprint a year.

/// PEIMAR

**solar**edge  
architects of energy™



## KEY FACTS

INSTALLED  
March 2019

169 x 285W solar Panels  
169 x P300 Optimisers  
1x SolarEdge Inverters

SIZE  
48.17 KWP

PANEL  
REC

INVERTER  
&  
OPTIMISER  
SOLAREGE

CO2 REDUCTION  
22,532Kg / year



Enhance your  
**green** credentials



Save you **£1000s**  
every year



Protect against  
**rising fuel costs**

In a market often associated with pushy sales people and poor customer care, our attention to detail and honest approach constantly reinforces our good reputation.

If you would like more information on how to become more energy efficient or would like to book a free, no-obligation survey to find out how much you could save then please get in touch.

✉ [info@empowerenergy.co.uk](mailto:info@empowerenergy.co.uk)

☎ 01425 461461

**EMPOWER**  
ENERGY

**TOMORROW'S GENERATION TODAY**