

COMMERCIAL CASE STUDY

Harlee Fish & Chips



EMPOWER
ENERGY

TOMORROW'S GENERATION TODAY

harlee Fish & Chips

Empower Energy was commissioned to design and install a 6 kWp solar PV system on Harlees roof in Verwood.

The system consisted of 18 x JA Solar and a SolarEdge SE5000 inverter system. SolarEdge inverters are specifically designed to work with a SolarEdge power optimiser. SolarEdge are able to increase energy production and are equipped with automatic shutdown for maximum safety.

The solar installation will help the business to save at least £621 a year in income and electricity savings. It will also reduce their carbon footprint by 49 tonnes

solaredge
architects of energy™

JA SOLAR



PEIMAR SG280P

KEY FACTS

INSTALLED
December 2019

SIZE
6 KWP

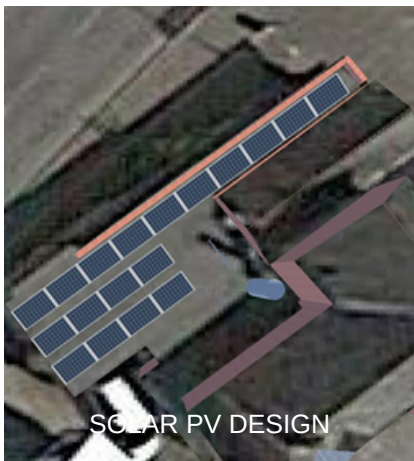
PANELS
JA Solar

INVERTER
&
OPTIMISER
SOLAREGE

PROJECTED OUTPUT
6 kWp / year



SolarEdge Inverter



SOLAR PV DESIGN

CO2 REDUCTION
2688 Kg/ year

ANNUAL SAVINGS
£ 621



Enhance your
green credentials



Save you **£1000s**
every year



Protect against
rising fuel costs

In a market often associated with pushy sales people and poor customer care, our attention to detail and honest approach constantly reinforces our good reputation.

If you would like more information on how to become more energy efficient or would like to book a free, no-obligation survey to find out how much you could save then please get in touch.

✉ info@empowerenergy.co.uk

☎ 01202 821 000

🌐 empowerenergy.co.uk

EMPOWER
ENERGY

TOMORROW'S GENERATION TODAY