

COMMERCIAL CASE STUDY

Cadent Gas Solar Farm



EMPOWER
ENERGY

TOMORROW'S GENERATION TODAY

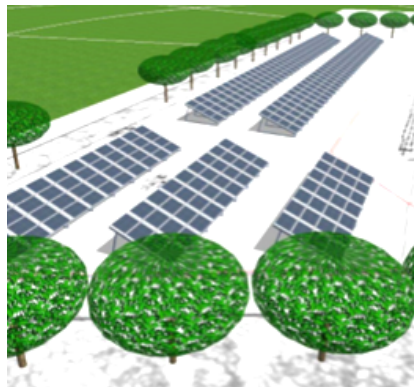
Cadent Gas Solar Farm

Empower Energy was commissioned by Cadent Gas to design and install a 128 KWp solar ground mount system. The system consists of 388 x JA Solar 335 solar panels, and a 2 x SolarEdge inverters. The SolarEdge inverter is specifically designed to work with the SolarEdge power optimisers, which are designed to increase energy production and equipped with automatic shutdown for maximum safety in case of an emergency.

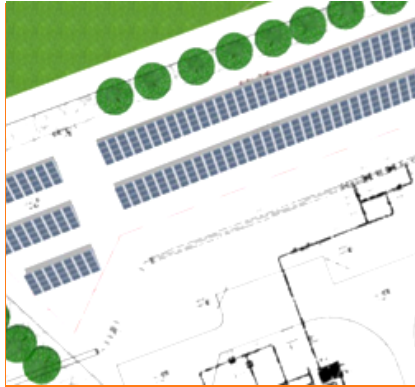
The solar installation will help the business to save at least £2,980 a year in income and electricity savings. It will also reduce 63136 kg of carbon footprint a year.

JA SOLAR

solar**edge**
architects of energy™



FULL ARRAY FROM THE AIR



BESPOKE ELEVATION



SOLAREGE INVERTER

KEY FACTS

INSTALLED
NOV 2019

SIZE
128 KWP

PANELS
JA Solars

INVERTER
&
OPTIMISER
SOLAREGE

PROJECTED OUTPUT
121,649 KWh / year

CO2 REDUCTION
63136 Kg / year

ANNUAL SAVINGS
£ 2,980



Enhance your
green credentials



Save you **£1000s**
every year



Protect against
rising fuel costs

In a market often associated with pushy sales people and poor customer care, our attention to detail and honest approach constantly reinforces our good reputation.

If you would like more information on how to become more energy efficient or would like to book a free, no-obligation survey to find out how much you could save then please get in touch.

✉ info@empowerenergy.co.uk

☎ 01202 821 000

EMPOWER
ENERGY

TOMORROW'S GENERATION TODAY