

COMMERCIAL CASE STUDY

# Talbot Heath School 39 kWp



**EMPOWER**  
ENERGY

**TOMORROW'S GENERATION TODAY**



# Talbot Heath School

## Site Description

280w Peimar Solar Modules  
(Italian Premier Panels)

## Installation Date

18th February 2019

## Installation Capacity

39 KWp

## Installation Capacity

2 x SolarEdge SE-1700w inverters  
140 x Peimar SG280P Modules

**MAXIMISE  
SOLAR  
ENERGY**



1607 Italian Peimar SG280P Modules

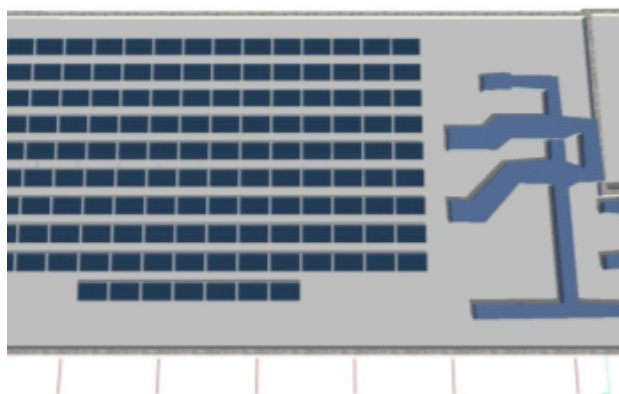
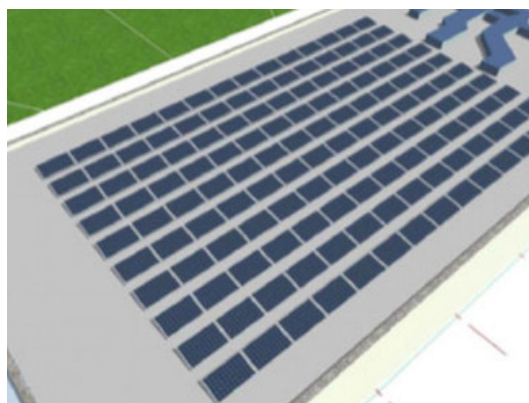


**solar**edge



Empower Energy was commissioned to design and install a 39KWp solar PV system on the rooftop of Talbot Heath School. The system consisted of 140 x Peimar SG280P modules & 2 x SolarEdge SE-17K inverters.

The solar installation will help the business to save at least £164,000 over 20 years. It will also save 400 tonnes of emissions, helping to significantly reduce their carbon footprint.



✉ [info@empowerenergy.co.uk](mailto:info@empowerenergy.co.uk) ☎ 01202 821 000

**TOMORROW'S GENERATION TODAY**

**EMPOWER  
ENERGY**