



COMMERCIAL CASE STUDY

Educational Arts & Crafts

EMPOWER
ENERGY

TOMORROW'S GENERATION TODAY

Educational Arts & Crafts

Empower Energy was commissioned to design and install a 28 KWp solar PV system on Educational Art & Craft Supplies.

The system consisted of 101 x Peimar SG280P and a SolarEdge SE25K inverter system. SolarEdge inverters are specifically designed to work with SolarEdge power optimiser to provide module-level monitoring.

The solar installation will help the business to save at least £2,160 a year in income and electricity savings. It will also reduce their carbon footprint by 163 tonnes



Peimar SG280P

KEY FACTS

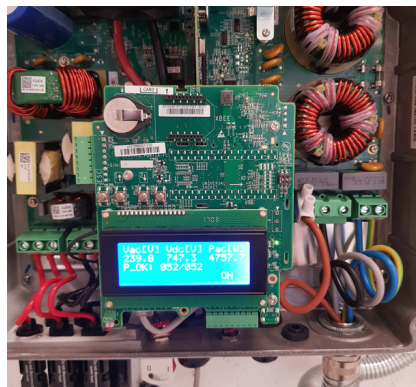
INSTALLED
March 2019

SIZE
28 KWP

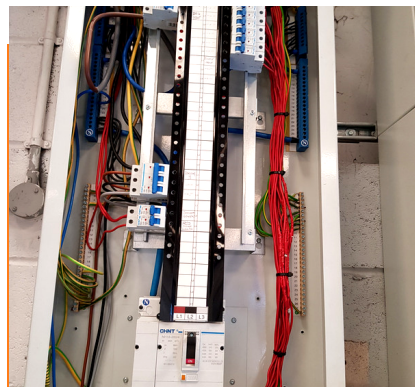
PANELS
Peimar SG280P

INVERTER
&
OPTIMISER
SOLAREGE

PROJECTED OUTPUT
22 KWh / year



SolarEdge Inverter



CO2 REDUCTION
12861 Kg / year

ANNUAL SAVINGS
£ 4,083



Enhance your
green credentials



Save you **£1000s**
every year



Protect against
rising fuel costs

In a market often associated with pushy sales people and poor customer care, our attention to detail and honest approach constantly reinforces our good reputation.

If you would like more information on how to become more energy efficient or would like to book a free, no-obligation survey to find out how much you could save then please get in touch.

✉ info@empowerenergy.co.uk

☎ 01202 821 000

💻 empowerenergy.co.uk

EMPOWER
ENERGY

TOMORROW'S GENERATION TODAY