

COMMERCIAL CASE STUDY

Bishops Waltham



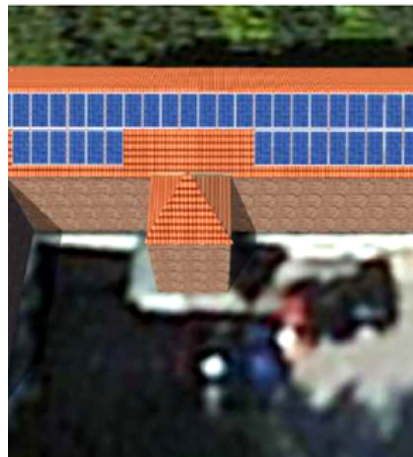
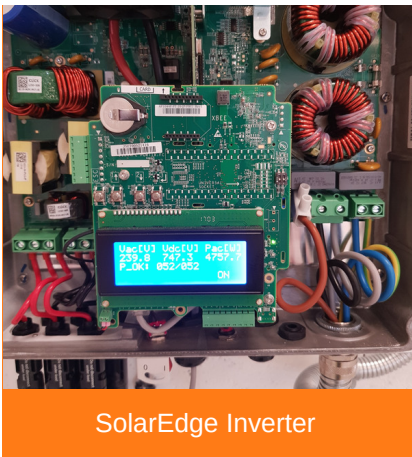
TOMORROW'S GENERATION TODAY

Bishops Waltham

Empower Energy was commissioned to design and install a 17 KWP solar PV system for Hampshire County Council.

The system consisted of 55 Canadian Solar CS6X-325P panels, 11 x SE17K SolarEdge Inverters, SE25K inverter system. SolarEdge inverters are specifically designed to work with SolarEdge power optimiser to provide module-level monitoring and safe DC.

The solar installation will help the business to save at least £2,160 a year in income and electricity savings. It will also reduce their carbon footprint by 163 tonnes



KEY FACTS

INSTALLED

May 2018

SIZE

17 KWP

PANELS

Canadian Solar
CS6-325P

INVERTER & OPTIMISER
SOLAREGE

PROJECTED OUTPUT

15 KWh / year

CO2 REDUCTION

11183 Kg / year

ANNUAL SAVINGS

£ 2,679



Enhance your
green credentials



Save you **£1000s**
every year



Protect against
rising fuel costs

In a market often associated with pushy sales people and poor customer care, our attention to detail and honest approach constantly reinforces our good reputation.

If you would like more information on how to become more energy efficient or would like to book a free, no-obligation survey to find out how much you could save then please get in touch.

✉ info@empowerenergy.co.uk

☎ 01202 821 000

💻 empowerenergy.co.uk

EMPOWER
ENERGY

TOMORROW'S GENERATION TODAY

