

COMMERCIAL CASE STUDY

Russell Finex Ltd



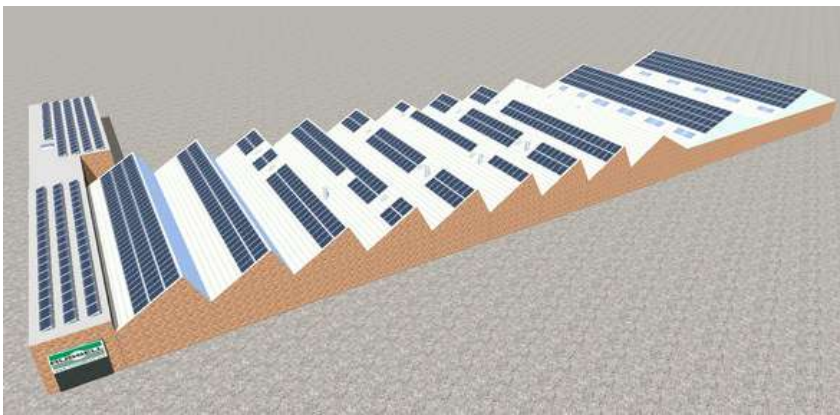
TOMORROW'S GENERATION TODAY

Russell Finex Ltd, Feltham

Empower Energy was commissioned by Russell Finex Ltd to design and install a 250 KWp Solar PV system. The installation is using the light tegra mounting system for the flat roofs and mounting rail system for the metal roofs. The system consist of 862 x SunEdison 290Wp solar panels, 432 x P600 optimisers and 9 x SE27.6 KW SolarEdge inverters. The SolarEdge inverter is specifically designed to work with the SolarEdge power optimiser, they are designed to increase energy production and are equipped with an automatic shutdown option for maximum safety. This solar installation will help the business to save at least £10,900 a year in electricity costs. It will also reduce 135,317 kg of carbon footprint a year.



METAL ROOF MOUNTING



SOLAR PV DESIGN

KEY FACTS

INSTALLED
DEC 2015

SIZE
250 KWP

PANEL
SUNEDISON

INVERTER
&
OPTIMISER
SOLAREGE

PROJECTED OUTPUT
225,528 KWh / year

CO2 REDUCTION

135,317 Kg / year

ANNUAL ELECTRICITY
SAVINGS

£ 10,900



Enhance your
green credentials



Save you **£1000s**
every year



Protect against
rising fuel costs

In a market often associated with pushy sales people and poor customer care, our attention to detail and honest approach constantly reinforces our good reputation.

If you would like more information on how to become more energy efficient or would like to book a free, no-obligation survey to find out how much you could save then please get in touch.

✉ info@empowerenergy.co.uk

☎ 01202 821 000

EMPOWER
ENERGY

TOMORROW'S GENERATION TODAY