

COMMERCIAL CASE STUDY:
Covers Group

GROUP PORTFOLIO

TOTAL OUTPUT
1,240,000 KW/h PA

'TOMORROW'S GENERATION TODAY'

EMPOWER
ENERGY

Covers Group, 1.37MWp portfolio

Empower were originally commissioned to undertake the maintenance of 512KWp of PV systems belonging to the Covers Group, a prominent builders merchant. The systems were spread across various depots spanning some 1500 square miles across the south.



Empower thoroughly examined the systems and found various ways of improving the output. This was in the form of fault finding and rectification, as well as the installation of a centralised monitoring system so the performance of all the sites can be remotely observed on one online portal ensuring minimal downtime.



The systems that were upgraded to SolarEdge power optimizer system have benefitted from increased yield thanks to the way the technology combats any losses

due to shading, soiling and ageing for example. The owner can be sure they are receiving the maximum amount of possible power from each panel.



HORSHAM



BOGNOR



ALDERSHOT

KEY FACTS

Phase 1 – November 2011
Phase 2 – throughout 2013

Overall system size **1.37 MWp** which is made up of over **5,700** solar panels

Generating approx **1,240,000 KWh** and saving **562,962Kg** of CO₂ every year

Across **14** different locations spanning **1500** square miles

All monitored and maintained by Empower Energy Ltd

Covers Group, 1.37MWp portfolio

The client can see individual panel performance in an easily accessible site map within the monitoring portal, giving full visibility of all their systems all in one place. Should a fault arise the area is quickly identified for rapid troubleshooting and the rest of the system remains unaffected.

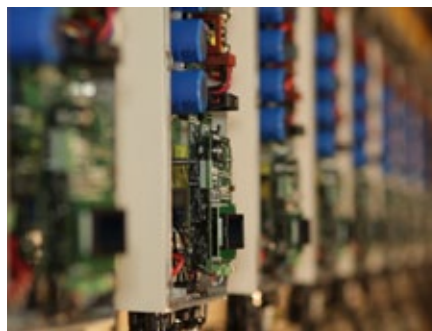
“It’s an absolute no-brainer”.

Covers Group financial Director
Rupert Green



The Board of directors were so impressed with the improvements in yield and monitoring that were made and decided to expand their portfolio, with Empower installing an additional **858KWp** of systems ranging from 50KWp to 250KWp across a further six sites through Sussex.

We opted to retrofit SolarEdge power optimizers significantly increase energy production – and they delivered as promised.



WHY SOLAR?



Enhance your
green credentials



Save you **£1000s**
every year



Protect against
rising fuel costs

In a market often associated with pushy sales people and poor customer care, our attention to detail and honest approach to every job we undertake constantly reinforces our good reputation.

If you would like more information on how to become more energy efficient or would like to book a free, no-obligation survey to find out how much you could save then please get in touch.

Email: info@empowerenergy.co.uk

Call us on: **01202 821 000**

Visit: www.empowerenergy.co.uk



‘TOMORROW’S GENERATION TODAY’

