

COMMERCIAL CASE STUDY

# Brixton St. Marys Primary School



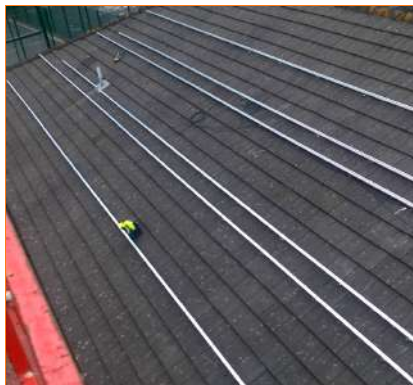
TOMORROW'S GENERATION TODAY



# Brixton St. Marys Primary School

Having completed a wide range of high-profile projects for school and local authorities, Empower Energy Ltd installed 15.9 KWp in Brixton St. Mary's Primary School located in Plymouth.

SunEdison approved a free solar system install in the school as part of the SunEdison solar farm plan. The school took advantage of the immediate saving. The system was designed with SolarEdge technology to maximise efficiency, providing up to 25% more energy than competitors.



SOLAR MOUNTING RAIL



ARRAY - PANELS



FULL ARRAY FROM THE AIR

## KEY FACTS

INSTALLED  
JUN 2015

SIZE  
15.9 KWP

PANEL  
SUNEDISON

INVERTER  
&  
OPTIMISER  
SOLAREGE

PROJECTED OUTPUT  
15,587 KWh / year

CO2 REDUCTION  
6,930 Kg / year

ANNUAL SAVINGS  
£ 1,380



Enhance your  
**green** credentials



Save you **£1000s**  
every year



Protect against  
**rising fuel costs**

In a market often associated with pushy sales people and poor customer care, our attention to detail and honest approach constantly reinforces our good reputation.

If you would like more information on how to become more energy efficient or would like to book a free, no-obligation survey to find out how much you could save then please get in touch.



[info@empowerenergy.co.uk](mailto:info@empowerenergy.co.uk)



01202 821 000

**EMPOWER**  
ENERGY

**TOMORROW'S GENERATION TODAY**