

COMMERCIAL CASE STUDY

# Basingstoke Fire Station



**TOMORROW'S GENERATION TODAY**

# Basingstoke Fire Station, Hampshire

Empower Energy was commissioned by Hampshire County Council to design and install a 24.84 kWp Solar PV system on Basingstoke Fire Station. The installation is east/west utilising an S-Flex mounting system. The system consisted of 92 x Canadian Solar 270Wp solar panels, 46 x P600 optimisers and a SolarEdge SE25KW inverter system. SolarEdge inverters are specifically designed to work with a SolarEdge power optimiser, which are able to increase energy production and are equipped with automatic shutdown for maximum safety.

The solar installation will help the business to save at least £3,328 a year in income and electricity savings. It will also reduce 12,575 kg of carbon footprint a year.



EASTWEST MOUNTING

## KEY FACTS

INSTALLED  
JULY 2017

SIZE  
24.84 KWP

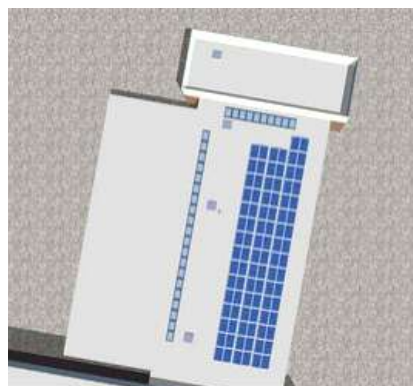
PANEL  
CANADIAN SOLAR

INVERTER  
&  
OPTIMISER  
SOLAREGE

PROJECTED OUTPUT  
20,959 KWh / year



SolarEdge Inverter



SOLAR PV DESIGN

CO2 REDUCTION  
12,575 Kg / year

ANNUAL SAVINGS  
£ 3,328



Enhance your  
**green** credentials



Save you **£1000s**  
every year



Protect against  
**rising fuel costs**

In a market often associated with pushy sales people and poor customer care, our attention to detail and honest approach constantly reinforces our good reputation.

If you would like more information on how to become more energy efficient or would like to book a free, no-obligation survey to find out how much you could save then please get in touch.

✉ [info@empowerenergy.co.uk](mailto:info@empowerenergy.co.uk)

☎ 01202 821 000

**EMPOWER**  
ENERGY

**TOMORROW'S GENERATION TODAY**